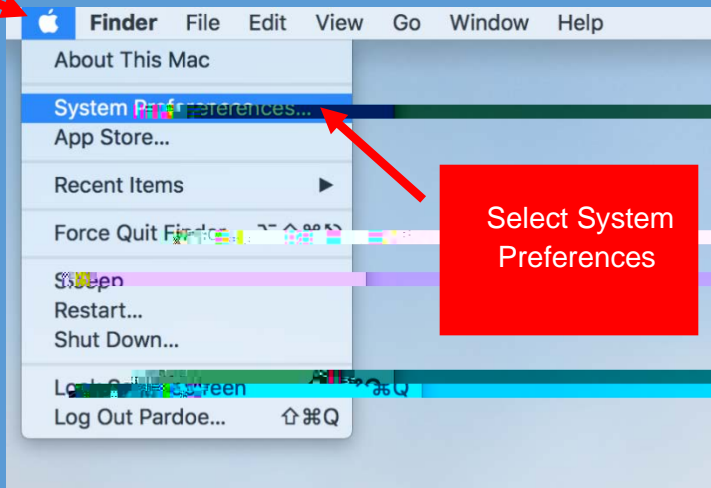


# Connecting to WiFi Using Mac

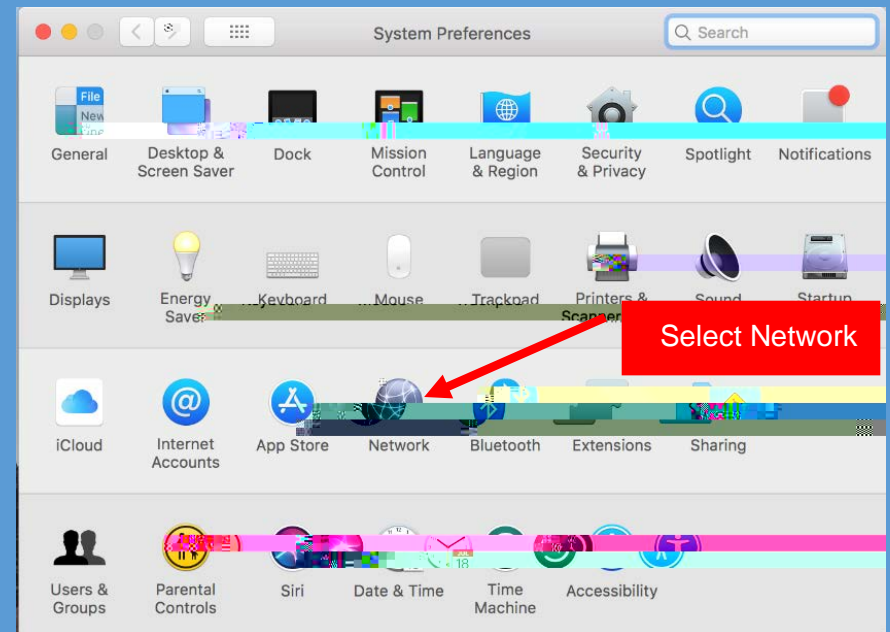
Click on the Apple Icon, select System Preferences

Click Apple Icon



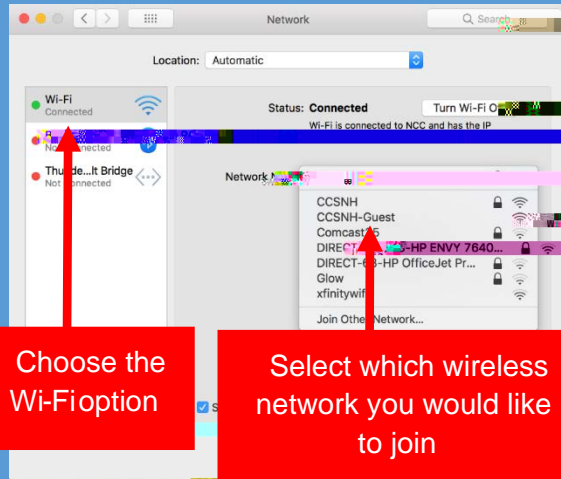
Select System Preferences

In the System Preferences window select Network



Select Network

Be sure to choose the Wi-Fi option on the left side of the screen

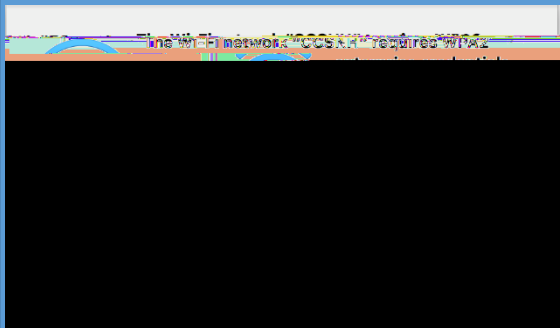


Click on the drop down menu next to Network Name and choose which wireless network you would like to connect to, either CCSNH or CCSNH Guest

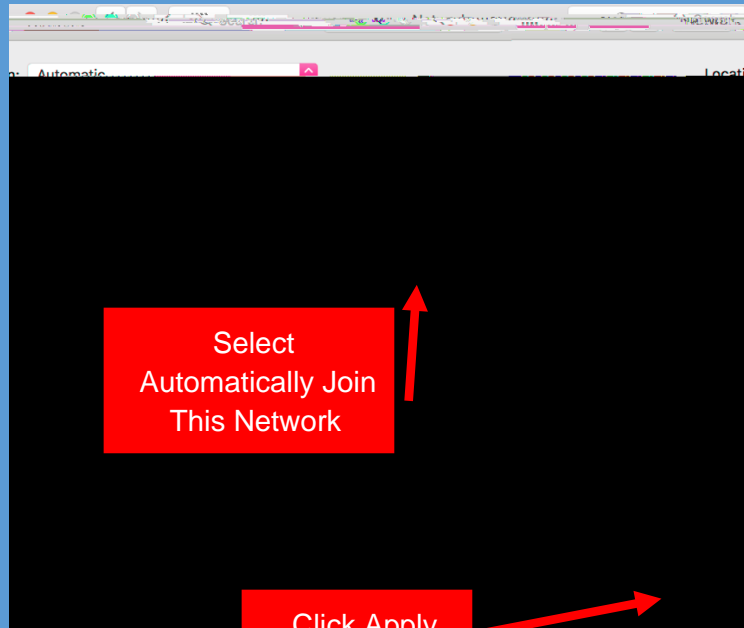
CCSNH will be used for any individual who has a valid CCSNH email account while CCSNH Guest will be used for anyone who is visiting the campus or has not yet been assigned an email address.

Although NCC is still visible it will no longer be an active network

Once you have chosen the correct network, you will be prompted to enter your username and password.



Please ensure that you have selected the Automatically Join This Network box, then click Apply



Once you are connected, our Wi-Fi should remember your username and password for you automatically.